

TradeAware

Validate EUDR Compliance with LiveEO's
End-2-End Solution

LiveEO 

LiveEO is the global market leader in satellite analytics

#1 global brand

in earth observation analytics

Scaled solutions

with customers on all continents

~120 Employees

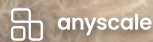
From 39 countries, including ~10 Ph.Ds and ~50 engineers

>€35M funding for deep tech

in funding from luminaries like Andreas v. Bechtolsheim - the first investor in Google

Partners & Suppliers

accenture



Customers

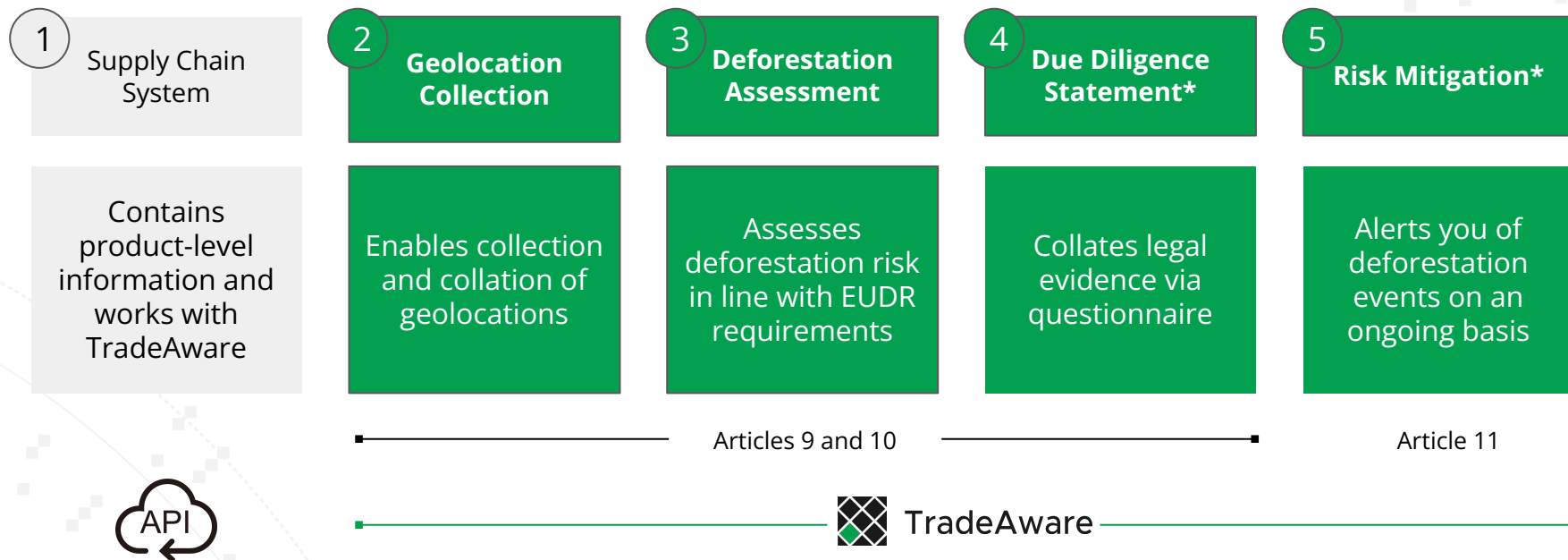


Solution Overview

Introduction to TradeAware

LiveEC 

We designed TradeAware to bridge the gap between your system and EUDR requirements



* Optional: these services can be included or excluded at customer's will

Deforestation Analysis

Reliable because aligned with EUDR standards

LiveEC 

LiveEO Solution: Complementing open-source data with proprietary satellite AI analysis

1. Phase: Open source layer collation

Combination of:

- EU Observatory TMF
- RADD
- GLAD
- EU Global Forest Baseline for 2020 (JRC)

2. Phase: High-accuracy analysis

LiveEOs proprietary, AI-based satellite analysis:

- **96% - 99%** validated accuracy (*compared to 50-88% accuracy of open-source*)
- **7x frequency & 10x spatial resolution**
- **Early alerts** for risky areas

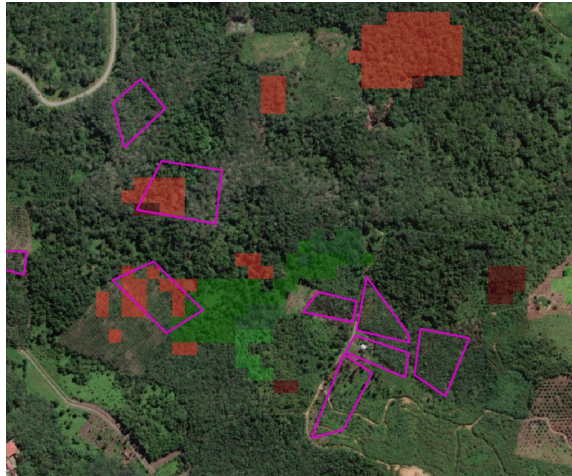
Example - Existing plantation since before 2020 with subsequent tree cover loss due to renovation

Reality 2020



Violet = Polygons

Global Forest Watch



Red = Deforestation

LiveEO Analysis



Green = Compliant

LiveEO's deforestation analysis fit vs Standards

LiveEO monitors **land use change / structural forest cover changes**, not just tree cover loss as in standard solutions

96-99% accuracy vs as low as 65% in standard solutions

Accuracy

Methodology

Compliance

Land use change, forest degradation, ongoing mitigation and analyses of complex terrain and meteorological conditions are possible

Global vs tropical areas in standard solutions

Coverage

Frequency

Access to **daily imagery** vs **bi-weekly** in standard solutions

Resolution

Access to imagery with **≈10X higher resolution** over standard (3.7m vs 10m)

How TradeAware works

Demo

LiveEC 

Invite your suppliers to provide EUDR information

The screenshot displays the LiveEO interface for a supplier profile. The top navigation bar includes 'HOME', 'ACTIONS', 'NAVIGATE', and 'REPORT'. The main header shows 'EDIT - VENDOR CARD' and '2532 - Riau Palm Oil Trader'. The 'General' section contains fields for 'No.' (2532), 'Name' (Riau Palm Oil Trader), 'Blocked', and 'Last Date Modified' (3/31/2016). The 'Address & Contact' section includes 'ADDRESS' (Salawati 143), 'Address 2', 'City' (West Papua), 'State', 'ZIP Code' (98451), and 'Country/Region Code' (Indonesia). The 'Invoicing' section includes 'Tax Registration No.', 'GLN', 'Tax Liab', 'Tax Area Code', 'Vendor No.', and 'Bank Communication' (E English). A 'Request for information' dialog box is open, asking 'Do you want to register 'Riau Palm Oil Trader' as a supplier in LiveEO DR?' and providing a brief explanation of the requirement. The 'Plots of Land' section is visible at the bottom, showing a table with columns for 'Plot', 'Supplier ID', and 'Country'. A 'Request for information' dialog box is also open, displaying the email template and a 'Send Request' button.

Do you want to register 'Riau Palm Oil Trader' as a supplier in LiveEO DR?

This will enable you to register the land used for commodity production and perform a due diligence.

Request for information

E-mail template
Initial invite

Mail preview

Because of the EU Deforestation regulation, we have to ensure that all the palm oil we buy from you and other suppliers come from parcels that have not been deforested after January 1st 2021.

Make sure that the data - especially parcel borders are correct and correspond with areas you used for growing the commodity. You must provide us with correct data under the penalty of legal action.

Case ID: 2532-1

Suppliers record their geolocations and submit legal documents.

Request ID: 2532-1 Uni-Ferre

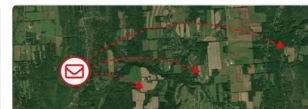
Select how you want to mark the land used for palm oil production for Uni-Ferre

You can change method later or combine them.



Draw borders around your plots of land

If you are the owner or can precisely define the area on the map from where the commodity has been supplied from click here.



Invite sub-supplier

If you are not the owner or don't have the exact locations of the Plots of Land, click here to assign the task to someone else.



Import GIS files

If you already have your Plots of Land marked in GIS files, click here to import the files.

Map Inbound Requests Plots Suppliers Users Logout

Select how you want to mark the land used for palm oil production for Uni-Ferre

Draw Plot on Map Invite Sub-supplier Import GIS file Complete Request

Search

Layers

Plot Details

Plot Name *

National ID *

Crop Grown, *

Cancel Save

ppbox

Suppliers can delegate the request to their sub-suppliers

LiveEC

Map Plots Requests

Invite suppliers ✕

Riau Palm Oil Trader Req ID: 2532-2

Invites you to mark the plots of land you use for growing commodities for Riau Palm Oil Trader.

Kami memerlukan Anda untuk menandai lahan yang Anda gunakan untuk memproduksi Minyak Kelapa Sawit untuk kami. Silakan klik tautan di email ini.

Jika Anda memiliki pertanyaan, jangan ragu untuk menghubungi saya.

Terbaik Budi Nür

Suppliers will only be able to see and edit their own data.

When the suppliers have marked their plot of land, you will be able to see all parcels related to Uni-Ferre (Req ID: 2532-1) on the map.

Mark the land used for palm oil production for Riau Palm Oil Trader

Request ID: 2532-2 Riau Palm Oil Trader

Search

Plot Details

Plot Name
West plot

Plot Owner
Adi Prasetyo

Farmer ID

National ID
Malaysia

Parcel Size
78 ha

Crop Grown
Oil palm

Last Tree Planted

Expected yield per Year

Owner Documents
Drag and Drop or Click here

You receive compliance-ready deforestation risk assessment, globally and at plot level.

The screenshot displays the LiveEC web application interface, divided into two main sections: a supplier details page and a map view.

Supplier Details Page:

- Header:** LiveEC logo, navigation links (Map, Inbound Requests, Plots, Suppliers, Users, Logout), and a user profile icon (CH).
- Navigation:** A breadcrumb trail shows '< Prestige Worldwide'. Action buttons include 'Email Supplier' and 'Analyze for Deforestation'.
- Details Section:**
 - Supplier name:** Prestige Worldwide
 - Contact email:** john.atkinson@live-ec.com
 - Address:** Kurfürstenstrasse 136, Berlin, 10785, Kurfürstenstrasse 136, DE
 - Commodities:** soya
- History Section:**
 - Request updated by Budi Nur
 - Case ID 2532-1: Updated fields: 2 parcel locations defined, Supplier ID, Supplier commodity, Contact person, Main address. (4 April 2023)
 - Request for information sent by Jim Harris
 - Case ID 2532-1: Request for details and plot location. (20 Mar 2023)
 - Supplier created by Jim Harris. (20 Mar 2023)

Plots of land Table:

<input type="checkbox"/>	Name	Surface area	Country code	Commodities	Updated at	Status
<input type="checkbox"/>	Palm Plot 1	3874.123263428398	ID	oil palm	Sep 20, 2023, 10:58 AM	Pending
<input type="checkbox"/>	It's A Plot!	310977.98654138215	ID	oil palm	Sep 29, 2023, 2:45 PM	Pending

Map View:

- Header:** LiveEC logo, navigation links (Map, Inbound Requests, Plots, Suppliers, Users, Logout), and a user profile icon (CH).
- Navigation:** 'Mark the land used for palm oil production for Uni-Ferre'. Action buttons include 'Draw Plot on Map', 'Invite Sub-supplier', 'Import GIS file', and 'Complete Request'.
- Map:** A satellite map showing land parcels with green and red overlays. A search bar is present.
- Layers Panel:**
 - History:
 - Plot analysis:
 - Deforestation:
 - No deforestation:
 - Map style: Satellite (selected) and Map

Create due diligence statements ready for upload and sharing.

Supplier list Dashboard collapsed

Supplier	Supplier ID	Country	Commodity	Product	Updated at	State	Status
<input type="checkbox"/> Riau Palm Oil Trader	235612	Malaysia	Palm Oil	Beauty Oil Elxir, NutriPal...	7/19/2023	In process	
<input type="checkbox"/> GreenHarvest Plantations	345633	Indonesia	Palm Oil, Soy	Beauty Oil Elxir, NutriPal...	7/19/2023	No deforestation	
<input type="checkbox"/> PalmGrove Agro-Industries	567845	Indonesia	Palm Oil	Beauty Oil Elxir, NutriPal...	7/19/2023	No deforestation	
<input type="checkbox"/> TropicalPalms Sdn Bhd	239443	Indonesia	Palm Oil	Beauty Oil Elxir, NutriPal...	7/19/2023	No deforestation	
<input type="checkbox"/> GoldenPalm Resources	173522	Malaysia	Palm Oil	Beauty Oil Elxir, NutriPal...	7/19/2023	No deforestation	
<input type="checkbox"/> EverGreen Plantations	845632	Malaysia	Palm Oil	Beauty Oil Elxir, NutriPal...	7/19/2023	No deforestation	
<input type="checkbox"/> EcoPalm Holdings	752231	Indonesia	Palm Oil	Beauty Oil Elxir, NutriPal...	7/19/2023	No deforestation	
<input type="checkbox"/> HarmonyPalms International	452242	Malaysia	Palm Oil	Beauty Oil Elxir, NutriPal...	7/19/2023	No deforestation	
<input type="checkbox"/> EmeraldPalm Trading Co.	674234	Malaysia	Palm Oil	Beauty Oil Elxir, NutriPal...	7/19/2023	Deforestation	
<input type="checkbox"/> SustainaPalm Group	459067	Malaysia	Palm Oil	Beauty Oil Elxir, NutriPal...	7/19/2023	Investigate	
<input type="checkbox"/> SerenePlantation Ventures	976236	Indonesia	Palm Oil	Beauty Oil Elxir, NutriPal...	7/19/2023	Investigate	

EUDR Due Diligence Statement

This Due Diligence Statement is made pursuant to article 4 of REGULATION (EU) 2023/1115 OF THE EUROPEAN PARLIAMENT AND OF THE COUNCIL of 31 May 2023 on the making available on the Union market and the export from the Union of certain commodities and products associated with deforestation and forest degradation and repealing Regulation (EU) No 995/2010.

Statement Reference Number	
Operator name	Uni-Ferre GmbH
Operator address	Cuvrystraße 48, 10627 Berlin
Economic Operators Registration and Identification (EORI) Number	DE 12 456 789 1234 5

The operator above intends to place the following relevant products on the market or export them from the market.

Harmonised System Code	1511 Palm oil and its fractions, whether or not refined, but not chemically modified
Description	High quality hand crème. Trade name: My Creme
Quantity	7.4 tons
Date or Time Range of Production	August-September 2023
Country of production	Malaysia
Geolocation of plots	30-7-23-1511-Ma.shp

By submitting this due diligence statement the operator confirms that due diligence in accordance with Regulation (EU) 2023/1115 was carried out and that no significant risks were found that the relevant products were produced on deforested land.

[Cancel](#) [Upload to EU Information Service...](#) [Sign the Statement...](#) [Save](#)

Thank you!

Looking forward to achieve
your EUDR compliance

Piero Marlia

Head of Business Development

piero.marlia@live-eo.com

+39 389 614 3908

Lion Langer

Business Development Manager

lion.langer@live-eo.com

+49 160 8151386